

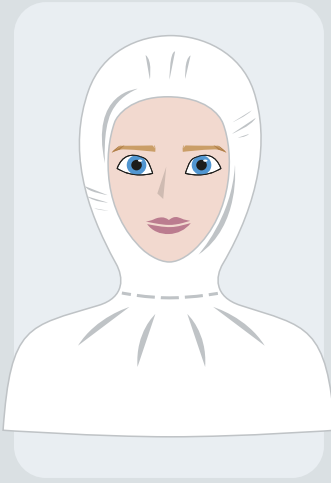


# COPPRICAPO

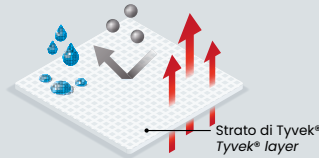
headgear

- 41 tyvek 500 | shield hood
- 42 clip cap | clip cap det
- 43 round cap & round cap 60 | peaked cap
- 44 net cap | hood mask
- 45 hood cap | spherical cap

# TYVEK 500



- Cappuccio in Tyvek® con ampio collare ed elastico attorno al collo e al viso
- Cuciture interne rinforzate
- Trattamento antistatico
- Rilascio particellare testato
- Indumento di protezione chimica e biologica parziale
- DPI III categoria
- ◆ Tyvek® hood with wide collar and elastic on neck and head
- ◆ Internal reinforced stitchings
- ◆ Antistatic treatment
- ◆ Linting test
- ◆ Partial body chemical and biological protection
- ◆ PPE III category



CODICI  
codes

TAGLIE  
sizes

PALLET  
pallet

IMBALLO INT.  
inner packing

IMBALLO EST.  
outer packing

COLORI  
colors

**TY196.19.01**

**UNICA**

**36 CT**

**1 PZ • PCS**

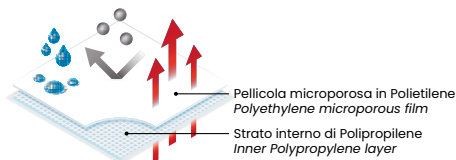
**100 PZ • PCS**

**BIANCO**

# SHIELD HOOD



- Cappuccio in laminato, 55 gr/m<sup>2</sup>
- Elastico al collo e intorno al viso
- Silicon free
- Trattamento antistatico
- Rilascio particellare testato
- Indumento di protezione chimica e biologica parziale
- DPI III categoria
- ◆ Laminated hood, 55 grams/m<sup>2</sup>
- ◆ Elastic at neck and around the face
- ◆ Silicon free
- ◆ Antistatic treatment
- ◆ Linting test
- ◆ Partial body chemical and biological protection
- ◆ PPE III category



CODICI  
codes

TAGLIE  
sizes

PALLET  
pallet

IMBALLO INT.  
inner packing

IMBALLO EST.  
outer packing

COLORI  
colors

**GA106.12.01**

**UNICA**

**24 CT**

**1 PZ • PCS**

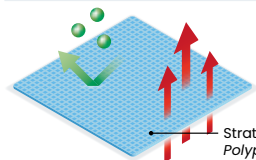
**200 PZ • PCS**

**BIANCO**

# CLIP CAP



- Cuffia clip in PLP, 14 gr/m<sup>2</sup>
- Doppio elastico
- Plissettata
- ø 53 cm
- DPI I categoria
- ◆ SPP clip cap, 14 grams/m<sup>2</sup>
- ◆ Double elasticated headband
- ◆ Pleated
- ◆ ø 53 cm
- ◆ PPE I category



Strato di Polipropilene  
Polypropylene layer



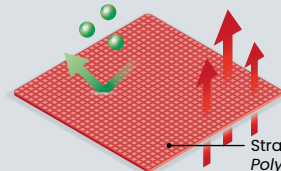
CODICI codes	TAGLIE sizes	PALLET pallet	IMBALLO INT. inner packing	IMBALLO EST. outer packing	COLORI colors
GA100.11.01	UNICA	48 CT	100 PZ • PCS	10 PZ • PCS	BIANCO
GA100.11.02	UNICA	48 CT	100 PZ • PCS	10 PZ • PCS	AZZURRO
GA100.11.03	UNICA	48 CT	100 PZ • PCS	10 PZ • PCS	VERDE
GA100.11.04	UNICA	48 CT	100 PZ • PCS	10 PZ • PCS	GIALLO
GA100.11.05	UNICA	48 CT	100 PZ • PCS	10 PZ • PCS	ROSSO
GA100.11.06	UNICA	48 CT	100 PZ • PCS	10 PZ • PCS	BLU SCURO

COPRICAPO  
headgear

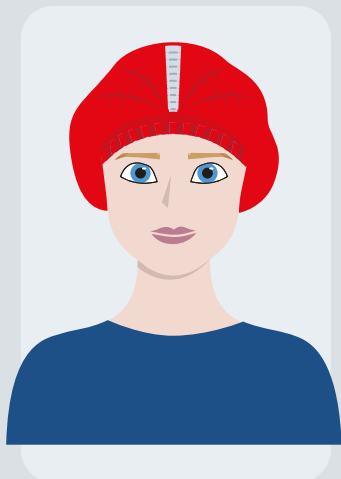
# CLIP CAP DET



- Cuffia clip in PLP, 14 gr/m<sup>2</sup>
- Doppio elastico
- Plissettata
- Lamina metallica rilevabile al metal detector
- ø 53 cm
- DPI I categoria
- ◆ SPP clip cap, 14 grams/m<sup>2</sup>
- ◆ Double elasticated headband
- ◆ Pleated
- ◆ Metal band for metal detector recording
- ◆ ø 53 cm
- ◆ PPE I category



Strato di Polipropilene  
Polypropylene layer

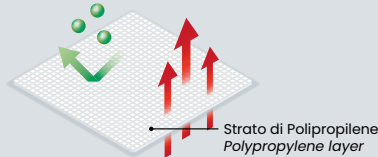


CODICI codes	TAGLIE sizes	PALLET pallet	IMBALLO INT. inner packing	IMBALLO EST. outer packing	COLORI colors
GA102.11.01	UNICA	48 CT	100 PZ • PCS	10 PZ • PCS	BIANCO
GA102.11.02	UNICA	48 CT	100 PZ • PCS	10 PZ • PCS	AZZURRO
GA102.11.05	UNICA	48 CT	100 PZ • PCS	10 PZ • PCS	ROSSO

# ROUND CAP



- Cuffia rotonda in PLP, 14 gr/m<sup>2</sup>
- Elastico singolo
- Forma rotonda
- ROUND CAP ø 53 cm
- ROUND CAP60 ø 60 cm (variante)
- DPI I categoria
- ◆ SPP bouffant cap, 14 grams/m<sup>2</sup>
- ◆ Single elasticated headband
- ◆ Round shape
- ◆ ROUND CAP ø 53 cm
- ◆ ROUND CAP 60 ø 60 cm (variant)
- ◆ PPE I category



PRODOTTO MONOUSO  
DISPOSABLE PRODUCT

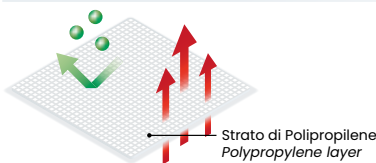


CODICI codes	TAGLIE sizes	PALLET pallet	IMBALLO INT. inner packing	IMBALLO EST. outer packing	COLORI colors
GA101.11.01	UNICA - ø 53 CM	54 CT	100 PZ • PCS	10 PZ • PCS	BIANCO
GA101.11.02	UNICA - ø 53 CM	54 CT	100 PZ • PCS	10 PZ • PCS	AZZURRO
GA101.11.03	UNICA - ø 53 CM	54 CT	100 PZ • PCS	10 PZ • PCS	VERDE
GA101.11.04	UNICA - ø 53 CM	54 CT	100 PZ • PCS	10 PZ • PCS	GIALLO
GA101.11.05	UNICA - ø 53 CM	54 CT	100 PZ • PCS	10 PZ • PCS	ROSSO
ROUND CAP 60 - DIAMETRO 60 CM (variante prodotto)					
GA161.11.01	UNICA - ø 60 CM	40 CT	100 PZ • PCS	10 PZ • PCS	BIANCO

# PEAKED CAP



- Cappellino in PLP, 40 gr/m<sup>2</sup>
- Visiera 80 gr/m<sup>2</sup>
- Forma a berretto
- Elastico posteriore
- ø 30 cm
- DPI I Categoria
- ◆ SPP cap, 40 grams/m<sup>2</sup>
- ◆ 80 grams/m<sup>2</sup> Peak
- ◆ Peaked cap
- ◆ Elastic on the backside
- ◆ ø 30 cm
- ◆ PPE I category



PRODOTTO MONOUSO  
DISPOSABLE PRODUCT

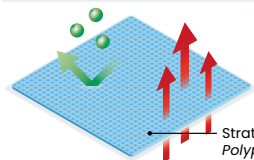


CODICI codes	TAGLIE sizes	PALLET pallet	IMBALLO INT. inner packing	IMBALLO EST. outer packing	COLORI colors
GA103.11.01	UNICA	24 CT	100 PZ • PCS	10 PZ • PCS	BIANCO
GA103.11.02	UNICA	24 CT	100 PZ • PCS	10 PZ • PCS	AZZURRO

# NET CAP



- Cappellino in PLP, 45 gr/m<sup>2</sup>
  - Visiera 90 gr/m<sup>2</sup>
  - Reggicapelli 14 gr/m<sup>2</sup>
  - Forma a berretto
  - ø 30 cm
  - DPI I categoria
- ◆ SPP cap, 45 grams/m<sup>2</sup>
  - ◆ 90 grams/m<sup>2</sup> Peak
  - ◆ 14 grams/m<sup>2</sup> Snood
  - ◆ Peaked cap
  - ◆ ø 30 cm
  - ◆ PPE I category



Strato di Polipropilene  
Polypropylene layer



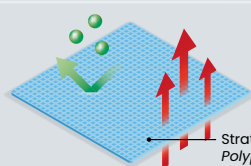
CODICI codes	TAGLIE sizes	PALLET pallet	IMBALLO INT. inner packing	IMBALLO EST. outer packing	COLORI colors
GA104.11.01	UNICA	24 CT	100 PZ • PCS	10 PZ • PCS	BIANCO
GA104.11.02	UNICA	24 CT	100 PZ • PCS	10 PZ • PCS	AZZURRO
GA104.11.03	UNICA	24 CT	100 PZ • PCS	10 PZ • PCS	VERDE
GA104.11.04	UNICA	24 CT	100 PZ • PCS	10 PZ • PCS	GIALLO
GA104.11.05	UNICA	24 CT	100 PZ • PCS	10 PZ • PCS	ROSSO



# HOOD MASK



- Cappuccio in PLP, 20 gr/m<sup>2</sup>
  - Mascherina PLP tre veli integrata
  - Elastico di chiusura al volto
  - DPI I categoria
- ◆ SPP Balaclava, 20 grams/m<sup>2</sup>
  - ◆ SPP three plies integrated face mask
  - ◆ Elastic closure on the face
  - ◆ PPE I category



Strato di Polipropilene  
Polypropylene layer



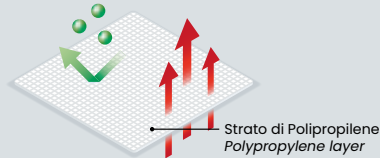
CODICI codes	TAGLIE sizes	PALLET pallet	IMBALLO INT. inner packing	IMBALLO EST. outer packing	COLORI colors
GA107.11.01	UNICA	30 CT	50 PZ • PCS	10 PZ • PCS	BIANCO
GA107.11.02	UNICA	30 CT	50 PZ • PCS	10 PZ • PCS	AZZURRO
GA107.11.03	UNICA	30 CT	50 PZ • PCS	10 PZ • PCS	VERDE
GA107.11.04	UNICA	30 CT	50 PZ • PCS	10 PZ • PCS	GIALLO
GA107.11.05	UNICA	30 CT	50 PZ • PCS	10 PZ • PCS	ROSSO

# HOOD CAP



- Cuffia clip in PLP, 20 gr/m<sup>2</sup>
- Elastico singolo alla fronte
- Scollo a V e davantino
- Leggero e traspirante
- DPI I categoria

- ◆ SPP clip cap, 20 grams/m<sup>2</sup>
- ◆ Single elasticated headband
- ◆ V neck and cape
- ◆ Transpirant and very light
- ◆ PPE I category



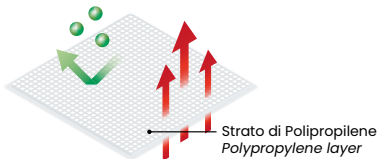
CODICI codes	TAGLIE sizes	PALLET pallet	IMBALLO INT. inner packing	IMBALLO EST. outer packing	COLORI colors
GA106.11.01	UNICA	28 CT	50 PZ • PCS	10 PZ • PCS	BIANCO
GA106.11.02	UNICA	28 CT	50 PZ • PCS	10 PZ • PCS	AZZURRO

COPRICAPO  
headgear

# SPHERICAL CAP



- Calotta sottoelmetto in PLP, 20 gr/m<sup>2</sup>
- Elastico alla nuca
- DPI I categoria
- ◆ SPP spherical cap, 20 grams/m<sup>2</sup>
- ◆ Elastic on the nape on the neck
- ◆ PPE I category



CODICI codes	TAGLIE sizes	PALLET pallet	IMBALLO INT. inner packing	IMBALLO EST. outer packing	COLORI colors
GA105.11.01	UNICA	20 CT	5 PZ • PCS	10 PZ • PCS	BIANCO