



ACCESSORI

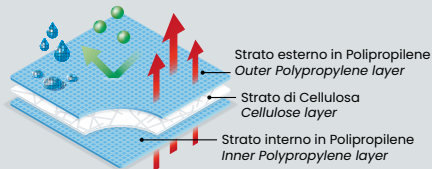
accessories

- 61 face mask 3 plies | face mask 1 ply
- 62 beard cover | beard cover double
- 63 bib pocket | sock nylon

FACE MASK 3 PLIES



- Mascherina in PLP
- Tre veli da 16, 20 e 35 gr/m²
- Elastici auricolari
- Termosaldata sui lati
- Costruzione a soffietto
- Assenza di fibra di vetro
- DPI I categoria
- ◆ SPP face mask
- ◆ Three plies, 16, 20 and 35 grams/m²
- ◆ Elastic ear bands
- ◆ Heat-sealed on the sides
- ◆ With folding
- ◆ Glass fiber free
- ◆ PPE I category

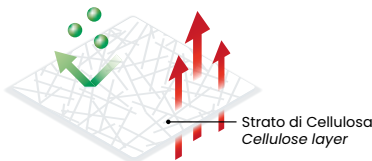


CODICI codes	TAGLIE sizes	PALLET pallet	IMBALLO INT. inner packing	IMBALLO EST. outer packing	COLORI colors
GA900.11.01	UNICA	20 CT	50 PZ • PCS	40 PZ • PCS	BIANCO
GA900.11.02	UNICA	20 CT	50 PZ • PCS	40 PZ • PCS	AZZURRO
GA900.11.03	UNICA	20 CT	50 PZ • PCS	40 PZ • PCS	VERDE

FACE MASK 1PLY



- Mascherina in carta, 16 gr/m²
- Un velo
- Elastici aricolari
- DPI I categoria
- ◆ Paper face mask, 16 grams/m²
- ◆ One ply
- ◆ Elastic ear bands
- ◆ PPE I category

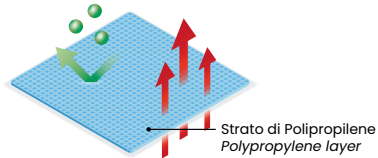


CODICI codes	TAGLIE sizes	PALLET pallet	IMBALLO INT. inner packing	IMBALLO EST. outer packing	COLORI colors
GA900.17.01	UNICA	18 CT	100 PZ • PCS	100 PZ • PCS	BIANCO

BEARD COVER



- Copribarba in PLP, 12 gr/m²
- Elastico nucale
- Anatomico
- Tramatura antipelo
- DPI I categoria
- ◆ SPP beard cover, 12 grams/m²
- ◆ Elastic at head
- ◆ Anatomic
- ◆ Fine mesh hairnet
- ◆ PPE I category

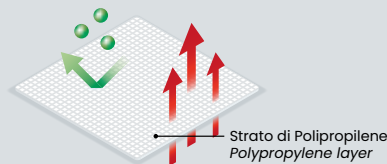


CODICI codes	TAGLIE sizes	PALLET pallet	IMBALLO INT. inner packing	IMBALLO EST. outer packing	COLORI colors
GA901.11.01	UNICA	72 CT	100 PZ • PCS	10 PZ • PCS	BIANCO
GA901.11.02	UNICA	72 CT	100 PZ • PCS	10 PZ • PCS	AZZURRO
GA901.11.03	UNICA	72 CT	100 PZ • PCS	10 PZ • PCS	VERDE
GA901.11.04	UNICA	72 CT	100 PZ • PCS	10 PZ • PCS	GIALLO
GA901.11.05	UNICA	72 CT	100 PZ • PCS	10 PZ • PCS	ROSSO

BEARD COVER DOUBLE

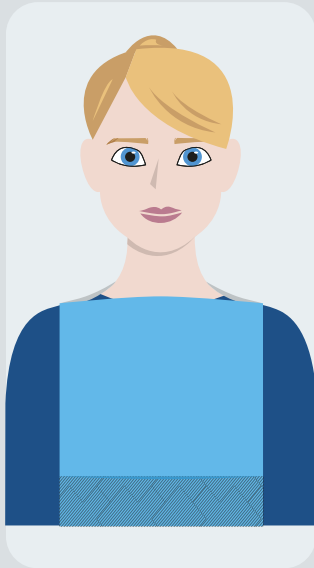


- Copribarba in PLP, 12 gr/m²
- Doppio elastico auricolare
- Anatomico
- Tramatura antipelo
- DPI I categoria
- ◆ SPP beard cover, 12 grams/m²
- ◆ Double elasticated ear band
- ◆ Anatomic
- ◆ Fine mesh hairnet
- ◆ PPE I category



CODICI codes	TAGLIE sizes	PALLET pallet	IMBALLO INT. inner packing	IMBALLO EST. outer packing	COLORI colors
GA911.11.01	UNICA	40 CT	100 PZ • PCS	20 PZ • PCS	BIANCO
GA911.11.02	UNICA	40 CT	100 PZ • PCS	20 PZ • PCS	AZZURRO

BIB POCKET



- Bavaglio a due veli impermeabile
 - Un velo in cellulosa 20 gr/m²
 - Un velo in PE 14 gr/m²
 - Tasca di raccolta e apertura capo pretagliata
 - Lacci di chiusura rinforzati
 - DPI I categoria
- ◆ *Two plies waterproof bib*
 - ◆ *One cellulose 20 grams/m² ply*
 - ◆ *One PE 14 grams/m² ply*
 - ◆ *Collection pocket and precut head opening*
 - ◆ *Reinforced closure laces*
 - ◆ *PPE I category*

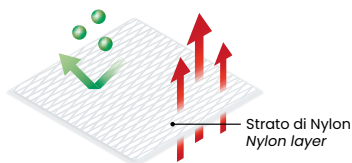


CODICI codes	TAGLIE sizes	PALLET pallet	IMBALLO INT. inner packing	IMBALLO EST. outer packing	COLORI colors
GA903.26.02	UNICA	36 CT	100 PZ • PCS	9 PZ • PCS	AZZURRO

SOCK NYLON



- Calzino in Nylon, 40 gr/m²
 - Banda elastica alla caviglia
 - Ambidestro
 - DPI I categoria
- ◆ *Nylon sock, 40 grams/m²*
 - ◆ *Elastic band at ankle*
 - ◆ *Ambidextrous*
 - ◆ *PPE I category*



CODICI codes	TAGLIE sizes	PALLET pallet	IMBALLO INT. inner packing	IMBALLO EST. outer packing	COLORI colors
GA902.11.01	UNICA	24 CT	200 PZ • PCS	10 PZ • PCS	BIANCO